

## Venous investigations with **VenoPulse** venous compression unit



## User manual

1. The unit may be attached to the ultrasound scanner.
2. Connect the unit to mains power (230 V). Turn on unit. The display should read approximately 000 mmHg. A few mmHg offset is quite acceptable. The zero level may be adjusted by the control screw at the rear panel.
3. Connect the unit to pressurized air (4-12 bar). A weak leak is heard – **and is normal** (adjustment bypass leak). The display indicates cuff compression pressure. Normally 130-150 mmHg is used. The pressure is adjusted at the back, after unlocking the locking nut and carefully turning the wheel. Fasten the locking nut after adjustment!
4. The cuff is connected to the front outlet and placed around the calf of the extremity to be investigated. The patient is best investigated standing, or lying at a very steep angle.
5. Locate the stem vein or side branch to be investigated by the ultrasound scanner. Preferably start investigation with colour flow mode (Fig. 1A, 1B) and finalize with spectral Doppler (Fig 1C).
6. Inflate cuff by the front cover switch “Cuff inflate” or the foot switch (Fig. 1A). Keep it pressed for 2-3 seconds, and then release. Note flow status following release (Fig. 1B). Normally there is a short distal reflux while the venous valves close; a reflux exceeding 0.5 seconds is usually defined pathological (Fig. 1C).

No special maintenance is required.

Replacement of pneumatic cuff:

Welch Allyn (Tycos) #5082-26, Cuff & Bag, Large Adult - 2 tubes

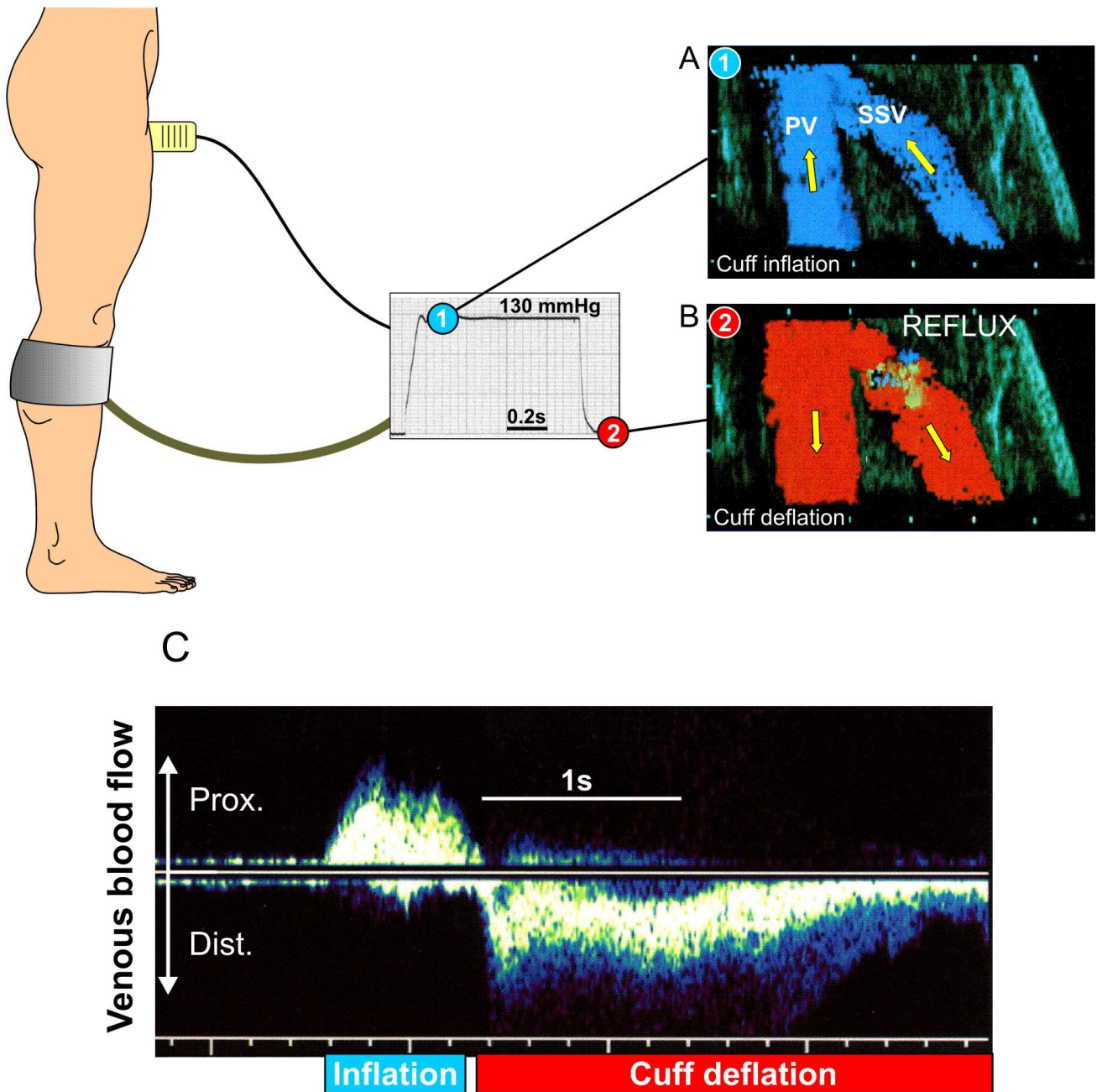


Fig. 1. Investigation procedure with the VenoPulse unit.

Einar Stranden PhD  
 STR Teknikk  
 Skotalia 15  
 6010 Aalesund, Norway  
 E-mail: [einar.stranden@mimer.no](mailto:einar.stranden@mimer.no)  
[www.strteknikk.no](http://www.strteknikk.no)

Distributor in Finland:  
 SONAR OY  
 PL 5  
 FIN-02201 ESPOO  
 Finland  
 Phone 09-5425420  
 Fax 09-4522523  
 Email: [sonar@sonar.fi](mailto:sonar@sonar.fi)